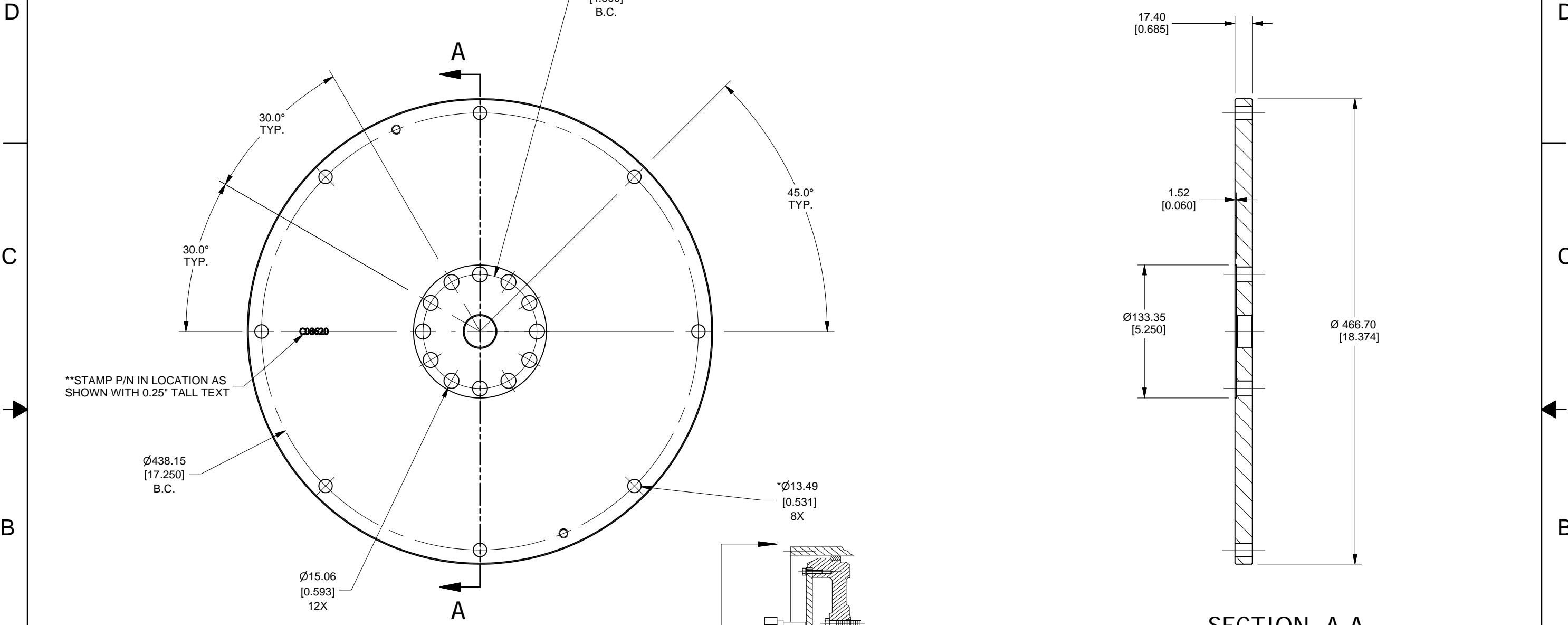


4 3 2 1



\*\*STAMP P/N IN LOCATION AS SHOWN WITH 0.25" TALL TEXT

TYPICAL DRIVE DISK MOUNTING OF FALK HUB

- NOTES:
1. REMOVE ANY/ALL SHARP EDGES AND BURRS.
  2. ALL THRU HOLES TO BE FREE OF ALL BURRS AND/OR OBSTRUCTIONS.
  3. IDENTIFY PART NUMBER BY EITHER STAMPING OR ETCHING.
  4. BREAK ALL CORNERS R 1.0mm [0.04"] MAX.

<small>THIS DRAWING AND THE INFORMATION HEREON ARE OUR PROPERTY AND MAY BE USED BY OTHERS ONLY AS AUTHORIZED BY US. UNPUBLISHED--ALL RIGHTS RESERVED UNDER THE COPYRIGHT LAWS</small>		<input type="checkbox"/> YES <input checked="" type="checkbox"/> NO CONTROLLED DRAWING	<b>CLARKE</b> Fire Protection Products, Inc.
MACHINE TOLERANCE DECIMAL mm inch X. ± 1.5 ± 0.06 X.X ± 0.8 ± 0.03 X.XX ± 0.3 ± 0.01 X.XXX ± 0.025 ± 0.001 X.XXXX ± 0.001 ± 0.001		DRWN DPOTTKOTTER DATE 9/7/2011 ENGR KRWAULIGMAN	NAME <b>DRIVE DISC, SAE 14" FLYWHEEL TO FALK 1100T COUPLING</b>
FABRICATION TOLERANCE DECIMAL mm inch X. ± 3 ± 0.12 X.X ± 1.5 ± 0.06 X.XX ± 0.75 ± 0.03 X.XXX ± 0.375 ± 0.015 X.XXXX ± 0.1875 ± 0.0075		MATERIAL A36 HRS	PART NO. C08620-W REV C
ANGULAR: ± 0.5° ANGULAR: ± 1.0°		ASSEMBLY SCALE NTS	UNITS MM [INCH] PAGE 1 OF 1

4 3 2 1