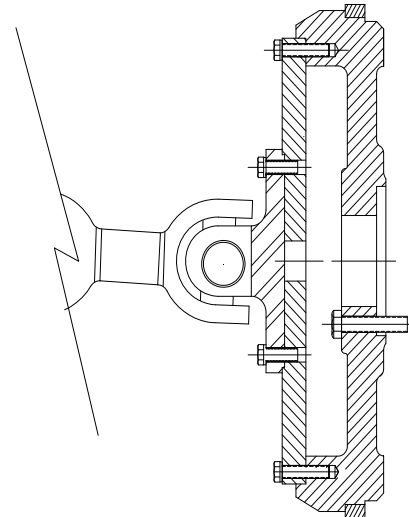
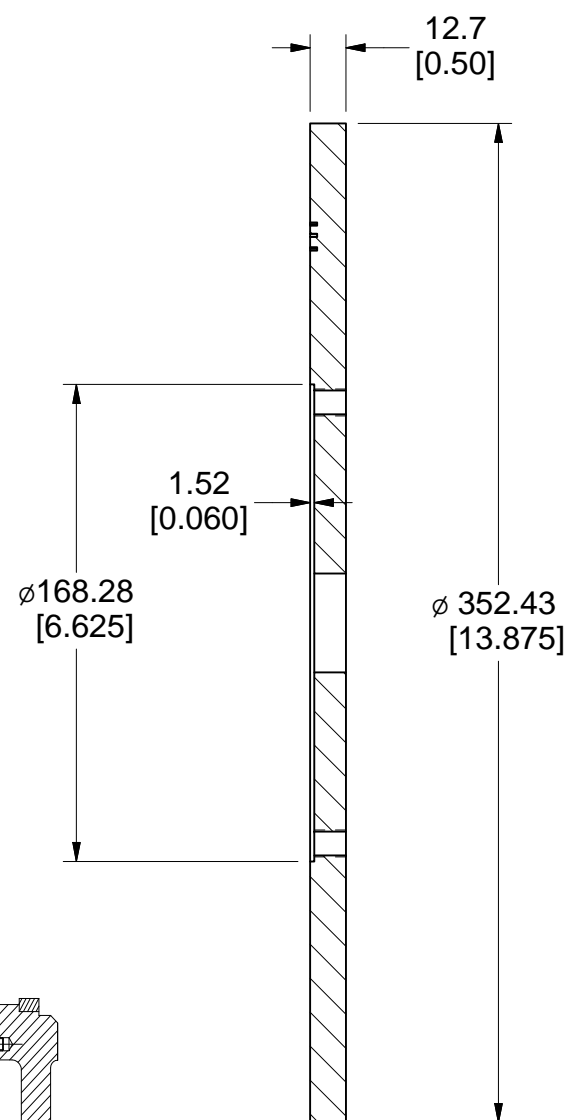


BOLT TORQUE
30 ft-lbs

- NOTES:
- 1) DRIVESHAFT MUST PILOT INTO ADAPTER DISC.
 - 2) USE ALL HI-STRENGTH GRADE 8 (SAE) MOUNTING HARDWARE. (REFERENCE C132073)
 - 3) JACKSCREW HOLES FOR ADAPTER DISC REMOVAL.



TYPICAL ADAPTER DISK MOUNTING OF CDS30 DRIVE SHAFTS



SECTION B-B

WEIGHT: lb (kg)
20.4 (9.3)

CLARKE			
Fire Protection Products, Inc.			
NAME			
ADAPTER DISK for CDS30 DRIVESHAFT			
MATERIAL	PART NO.	REV	
A36 HRS	C083762-W	C	
SCALE	UNITS	PAGE	OF
NTS	MM [INCH]	1	1