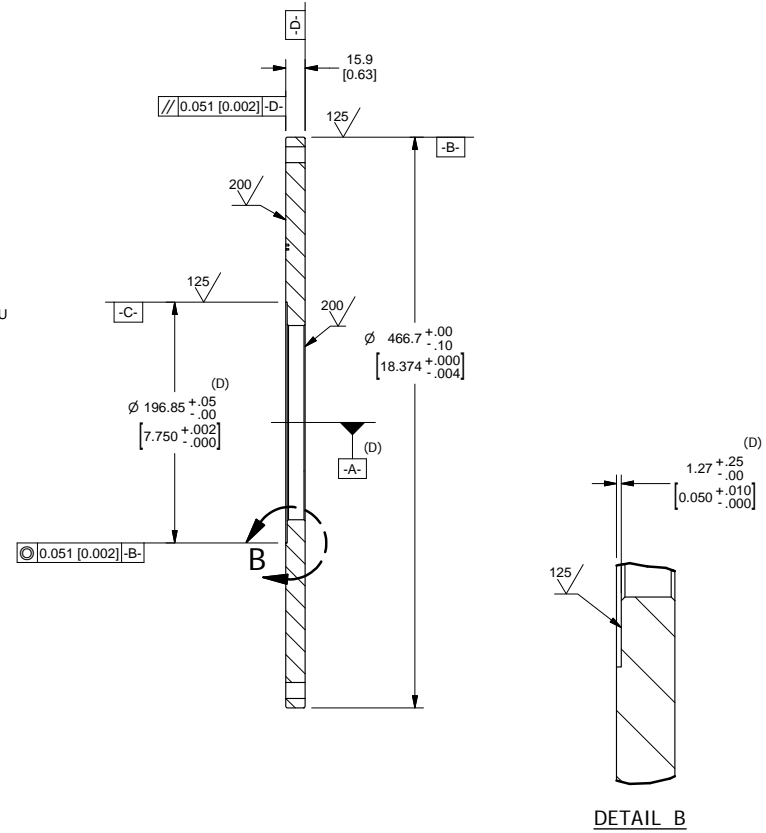
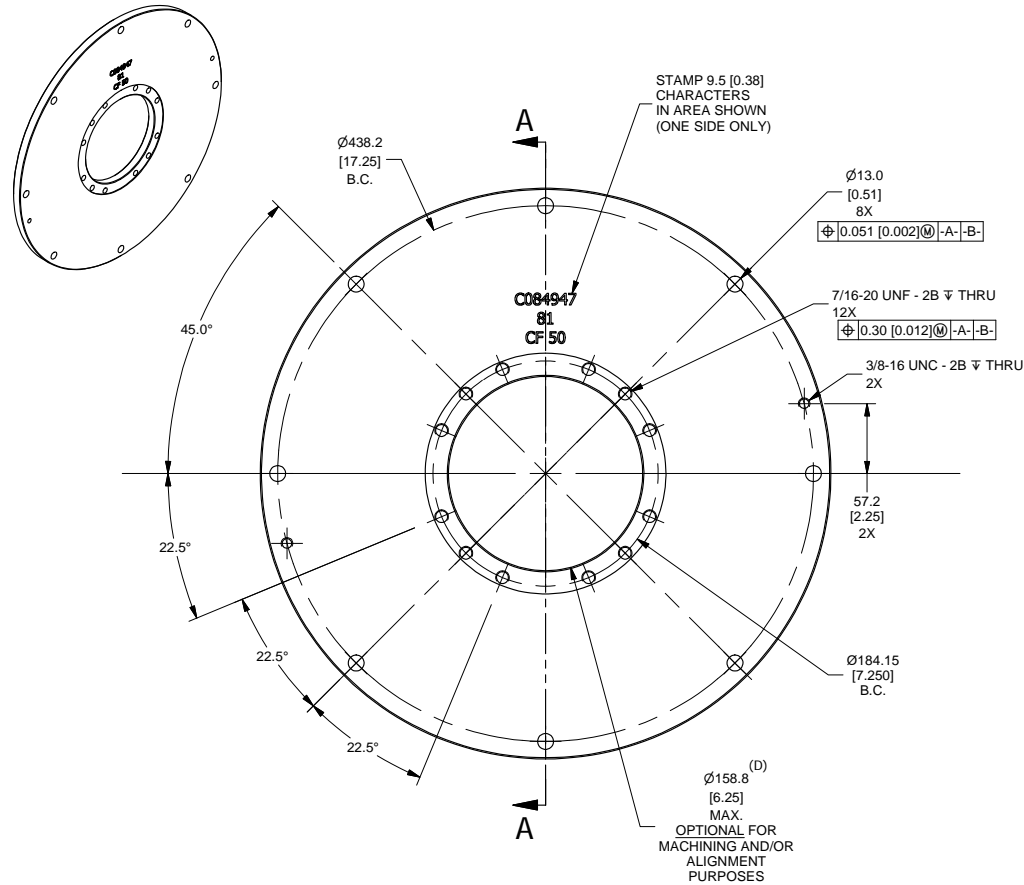


| MFR. P/N | DESCRIPTION | MASS | MATERIAL |
|----------|--|-------------|----------|
| C084947 | DRIVE DISC - SAE 14 FLYWHEEL FOR 81(CF50) COMPANION FLANGE | 40.7 lbmass | A36 HRS |

| REV | DESCRIPTION | ECN# | DWN | APVD | DATE |
|-----|---------------------------------|------|-----|------------|---------|
| A | RELEASED TO PRODUCTION | 2231 | RJT | <i>RJE</i> | 05APR11 |
| B | REMOVED 8 MOUNTING HOLES | 2420 | DGP | <i>RJE</i> | 06SEP11 |
| C | O.D. WAS 18.335 +0.000 / -0.005 | 2420 | RJT | <i>RJE</i> | 01NOV11 |
| D | UPDATED PILOT BORE DETAILS | 2644 | RJT | <i>RJE</i> | 13JUN12 |
| - | ADDED NOTE 5 | 2876 | MLL | <i>RJE</i> | 15JAN13 |
| - | REMOVE (*) FROM DESCRIPTIONS | N/A | JCA | JCA | 12APR18 |



- NOTES:
1. REMOVE ANY/ALL SHARP EDGES AND BURRS.
 2. ALL THRU HOLES TO BE FREE OF ALL BURRS AND/OR OBSTRUCTIONS.
 3. IDENTIFY PART NUMBERS BY EITHER STAMPING OR ETCHING.
 4. BREAK ALL CORNERS R1.0 [0.04].
 5. ACCEPTABLE RUST PREVENTION:
IRON PHOSPHATE COATING, COATING WEIGHT IS 45 TO 70 MG/FT²

| | | | | | |
|---|--|--|--|--|--|
| <small>THIS DRAWING AND THE INFORMATION HEREON ARE OUR PROPERTY AND MAY BE USED BY OTHERS ONLY AS AUTHORIZED BY US. UNPUBLISHED - ALL RIGHTS RESERVED UNDER THE COPYRIGHT LAWS.</small> | | <input checked="" type="checkbox"/> CONTROLLED DRAWING | | CLARKE <i>Fire Protection Products, Inc.</i> | |
| <small>MACHINE TOLERANCE</small> DECIMAL: .001 ± 0.001 .005 ± 0.005 .010 ± 0.010 .020 ± 0.020 .050 ± 0.050 .100 ± 0.100 .150 ± 0.150 .200 ± 0.200 .300 ± 0.300 .500 ± 0.500 1.000 ± 1.000 2.000 ± 2.000 5.000 ± 5.000 10.000 ± 10.000 .005 ± 0.005 .010 ± 0.010 .020 ± 0.020 .050 ± 0.050 .100 ± 0.100 .150 ± 0.150 .200 ± 0.200 .300 ± 0.300 .500 ± 0.500 1.000 ± 1.000 2.000 ± 2.000 5.000 ± 5.000 10.000 ± 10.000 | | DRWN: RTOLLE DATE: 4/5/2011 ENGR: KKUNKLER | | NAME: DRIVE DISC - SAE 14 FLYWHEEL FOR 81(CF50) COMPANION FLANGE PART NO: C084947 | |
| <small>FABRICATION TOLERANCE</small> DECIMAL: ± 0.001 .005 ± 0.005 .010 ± 0.010 .020 ± 0.020 .050 ± 0.050 .100 ± 0.100 .150 ± 0.150 .200 ± 0.200 .300 ± 0.300 .500 ± 0.500 1.000 ± 1.000 2.000 ± 2.000 5.000 ± 5.000 10.000 ± 10.000 ANGLAR: ± 1.0° | | MATERIAL: A36 HRS ASSEMBLY: DPHH & DQGH | | SCALE: NTS UNITS: MM [INCH] PAGE: 1 OF 1 | |