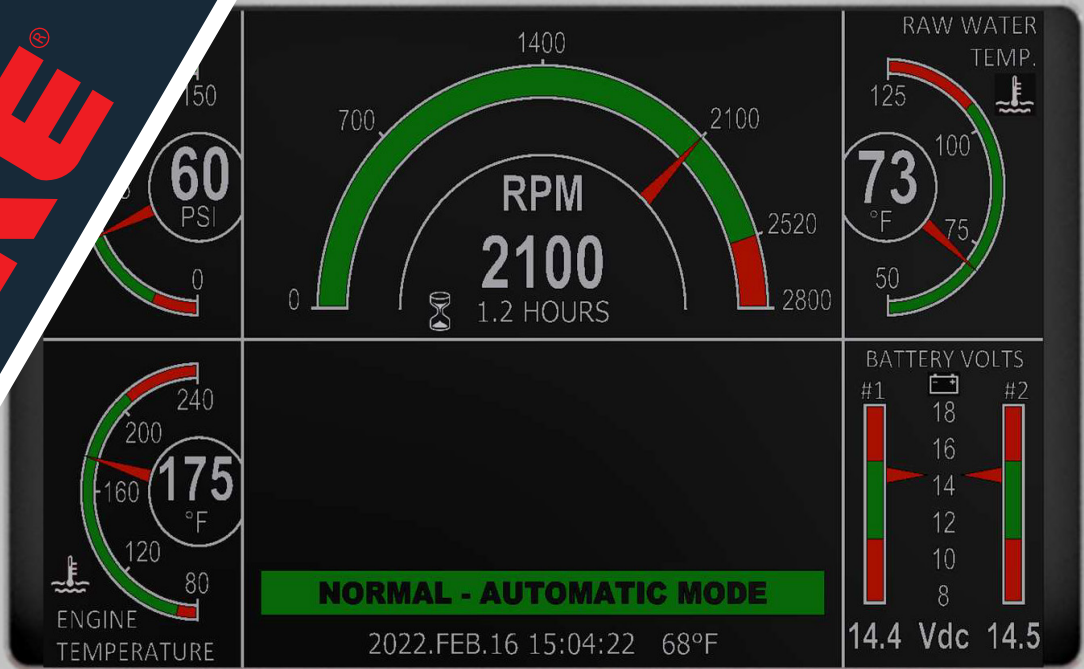


CLARKE®



Touch Screen Panel Mechanical (TSP-M)



Clarke's New Touch Screen Panel - Mechanical (TSP-M) provides the following benefits:

- Highly visible engine status and alarm indications
- Simplified on-screen alarm verification procedures
- Easier field connections to fire control panel
- Constructed with a standard NEMA4/IP66 rated enclosure (also available in a Type 4X/IP66 Stainless Steel enclosure)

CLARKE®

100 Progress Place, Cincinnati, OH 45246
United States of America
Tel +1-513-475-3473 Fax +1-513-771-8930

Grange Works, Lomand Rd, Coatbridge, ML5-2NN
United Kingdom
Tel +44-1236-429946 Fax +44-1236-427274

www.clarkefire.com

COMMON FEATURES	DESCRIPTION
Construction and Environmental	<ul style="list-style-type: none"> Complies with UL 50 / 50E and NEMA Type 4 test requirements of flame and impact resistance, provides a degree of protection against hose directed water and ingress of foreign objects. Meets all requirements of UL 1247, FM 1333, NFPA 20. Rated to IP66 for no ingress of dust or high pressure water jets Front hinged door for easy access to inside with full perimeter gasket Tested for electromagnetic compatibility per CISPR 11 For non-hazardous, unclassified areas
Instruction Plate	<ul style="list-style-type: none"> English language standard, optional dual language available upon request
Electrical	<ul style="list-style-type: none"> Operating voltage: 12V and 24V nominal systems, reverse polarity protected
Field Wiring Connections	<ul style="list-style-type: none"> Dedicated wiring entrance plug allows 1" (25mm) conduit fitting. Labeled terminal block with lever actuated spring cage connections.
Mounting	<ul style="list-style-type: none"> Mounted to engine via rubber isolation mounts to safeguard against vibration

CONSTRUCTION DETAILS	DESCRIPTION
Gauges	<ul style="list-style-type: none"> Touch screen panel featuring tachometer, hour meter, oil pressure, coolant temperature, raw water temperature, battery 1 and 2 voltmeters, date and time, ambient temperature and manual/automatic mode status.
Operator Control Switches	<ul style="list-style-type: none"> Mode selector switch Manual Crank 1 Manual Crank 2
Indicating Lamps	<ul style="list-style-type: none"> Panel status indicator Control Board Trouble-shooting LEDs
Fire Pump Controller Terminals	<ul style="list-style-type: none"> 1, 2, 3, 4, 5, 6, 8, 9, 10, 11a & 11b, 12, 310, 311, 312
Other	<ul style="list-style-type: none"> Self-Resetting circuit breakers protect the control panel in the event of a damaging power surge. Emergency Run Override, utilized only on energized to run engines, will manually switch battery voltage to the fuel run solenoid. USB Connection used to extract event log data files. Panel Status LED indicator providing pump room technicians with quick reference to a system's status. A simple standby intermittent blink tells users that the system is connected and ready to use.
Dimensions (Width x Height x Depth), Inches / Millimeters	<ul style="list-style-type: none"> 16.59 x 12.67 x 7.17 / (421.5 x 321.9 x 182.2)

Standard NEMA Type 4 (IP66)

Stainless Steel Option NEMA Type 4X (IP66)



Specifications and information contained in this brochure are subject to change without notice.