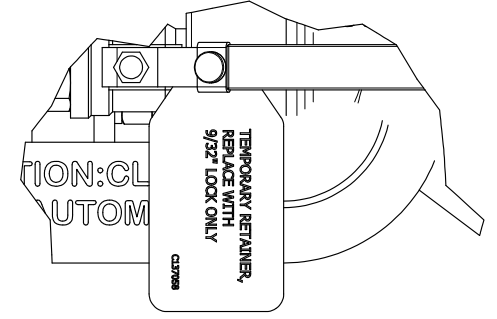
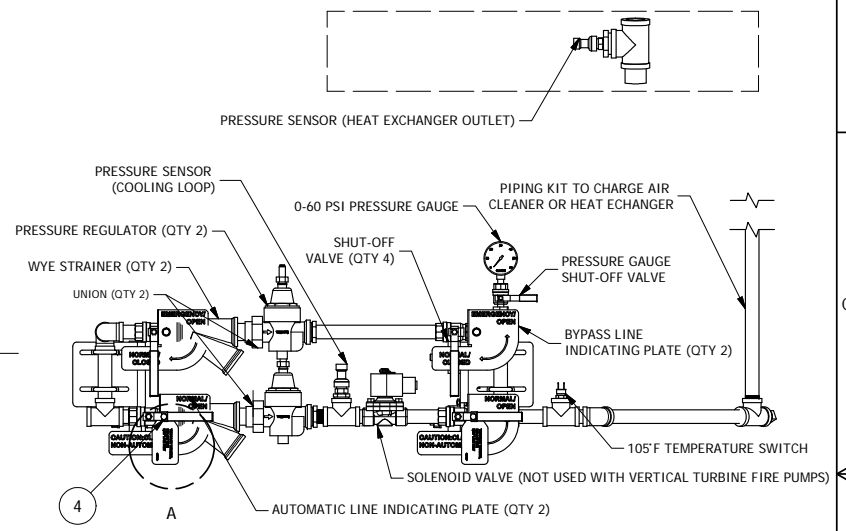
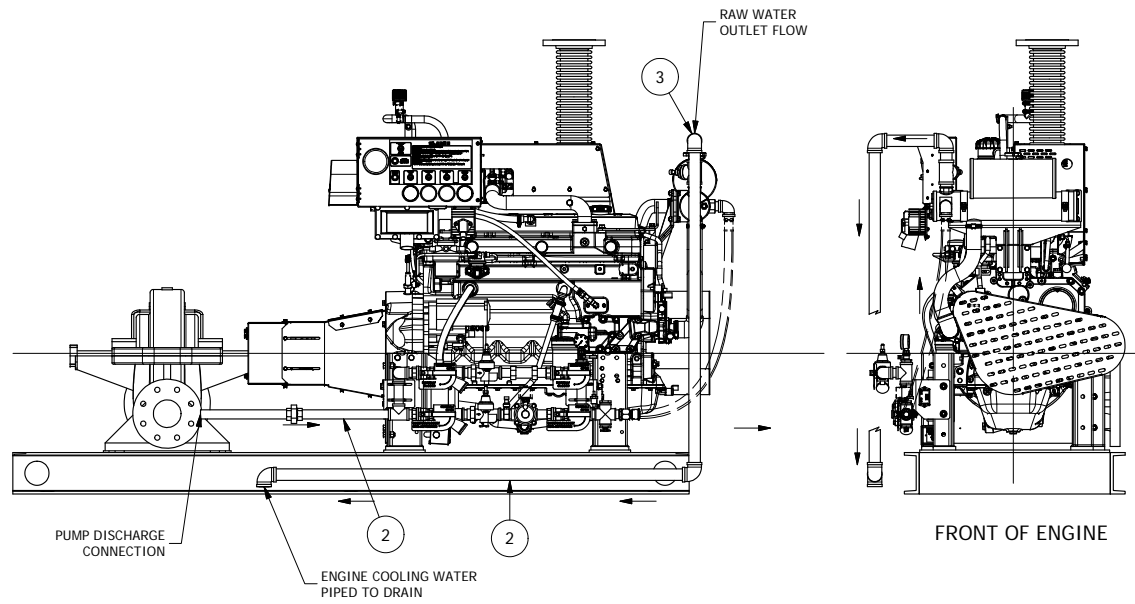


REV	DESCRIPTION	ECN#	DWN	APVD	DATE
A	ISSUED ENGINEERING DRAWING	N/A	MAL	<i>KRW</i>	14AUG03
B	ADDED VALVE INDICATOR OPEN/CLOSE TO LOOP	540	JJW	<i>KRW</i>	04APR06
C	ADDED NEW ALARMS TO PIPING KIT	3633	KFB	<i>KRW</i>	30MAR15
D	ADDED VALVE TAGS AND PINS, DETAIL A	4778	DDS	<i>KRW</i>	27FEB17
E	UPDATED TITLE BLOCK, ADDED CURRENT ENGINE MODEL	5098	CRD	JCA	10OCT18



DETAIL A
(SEE NOTE 4)

NOTES:

- ① PIPING ARRANGEMENT PER NFPA-20.
- ② PIPING BY OTHER.
- ③ DISCHARGE PIPING FROM HEAT EXCHANGER OUTLET IS AT A MINIMUM ONE PIPE SIZE LARGER THAN THE INLET PIPING TO THE HEAT EXCHANGERS
- ④ SHUT OFF VALVES IN THE AUTOMATIC FLOW LINE ARE PROVIDED WITH LOCKABLE HANDLES FOR COOLING LOOPS TESTED TO FM REQUIREMENTS. THESE VALVES HAVE BEEN PROVIDED WITH A TEMPORARY LOCKING PIN TO KEEP THEM IN OPEN POSITION. RETAINER NEEDS TO BE REPLACED WITH A 9/32" LOCK.

→ COOLING LOOP WATER - DIRECTION OF FLOW

<small>THIS DRAWING AND THE INFORMATION HEREON ARE OUR PROPERTY AND MAY BE USED BY OTHERS ONLY AS AUTHORIZED BY US. UNPUBLISHED - ALL RIGHTS RESERVED UNDER THE COPYRIGHT LAWS.</small>		<input checked="" type="checkbox"/> CONTROLLED DRAWING	
<small>DATE</small> MALAUER 3/30/2015	<small>NAME</small> KRWAULIGMAN	NFPA-20 COOLING LOOP PIPING DETAIL	
<small>MATERIAL</small> 	<small>PART NO.</small> C130977	<small>REV</small> E	
<small>ASSEMBLY</small> 	<small>SCALE</small> NTS	<small>UNITS</small> MM [INCH]	
<small>SIMILAR TO</small> N/A		<small>PAGE</small> 1	