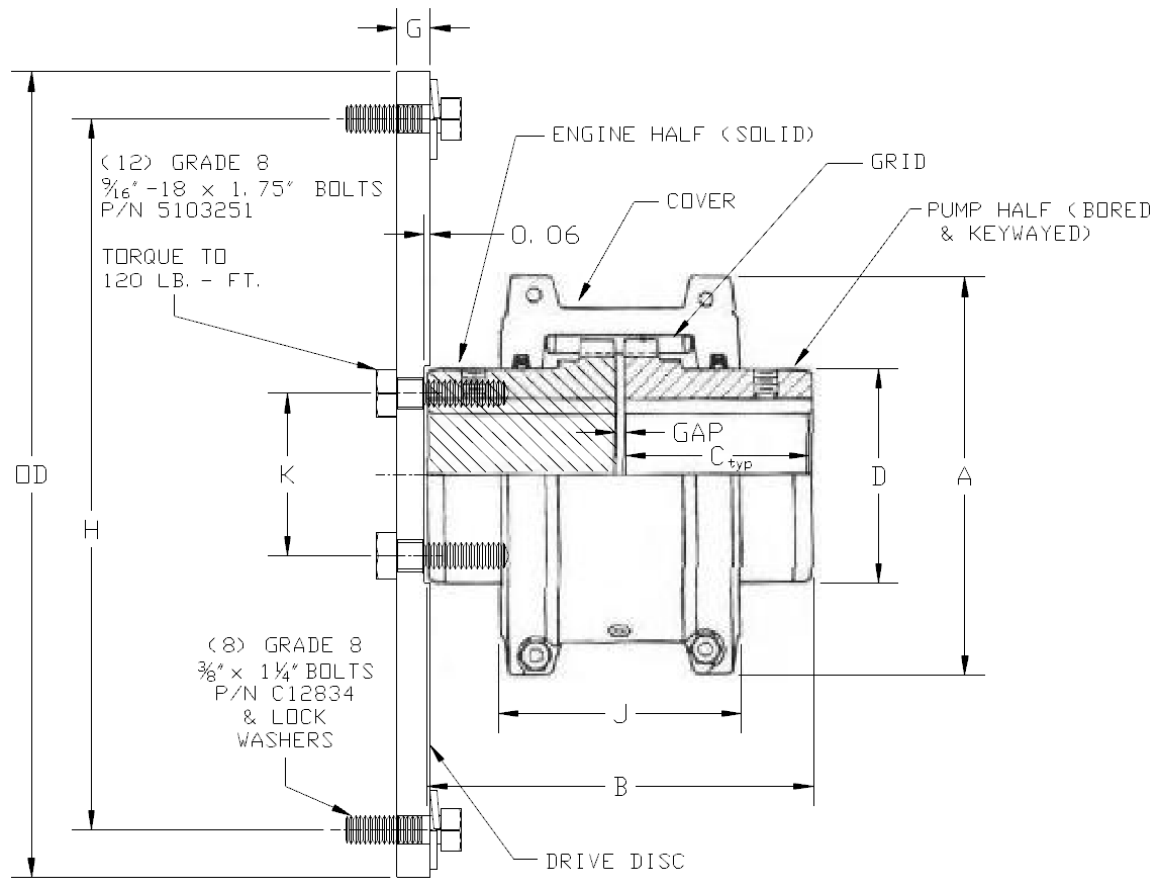
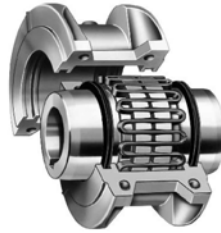


## Falk "Steelflex" 1100 T10 Coupling with SAE 11.5" Flywheel Coupling Assembly



### Dimensional Data

A	B	C	D	G	H	J	K	OD	GAP	Coupling Weight (lbs)	Drive Disc Weight (lbs)	Total Weight (lbs)
9.88	9.67	4.75	5.59	0.685	13.125	6.12	4.500	13.875	0.188	93	23	116

#### Notes:

- 1) Unless otherwise specified, all dimensions are in inches.
- 2) For  $WR^2$  & torsional spring rate see 2 of 2.
- 3) Choosing the proper size coupling is based off of a service factor of 1.0 in Table 1 and corresponding engine service factors in Table 2 per Falk catalog 421-110, page 7.

# Falk "Steelflex" 1100 T10 Coupling with SAE 11.5" Flywheel Coupling Assembly

## Torsional Data

WR<sup>2</sup> value (engine drive disc not included) = 609 lb-in.<sup>2</sup>

(WR<sup>2</sup> values are based on hubs with no bore; seals, lube, and gaskets are not considered)

