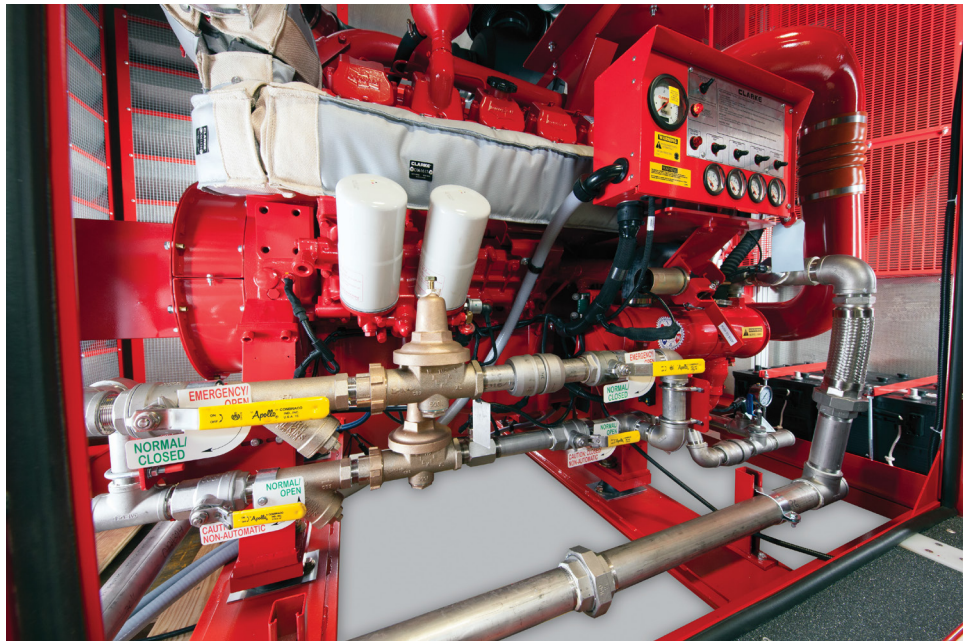


CUSTOMIZED OPTIONS FOR YOUR FIRE PUMP DRIVER NEEDS



Sound Attenuated Enclosure with FM Approved Sea Water Compatible Cooling Loop

Engine/Enclosure show is for illustrative purposes only. Check factory for option availability on all Clarke engine models



Enclosure Digital Display



Critical Grade 316SS Exhaust Silencers

Rigid customer specifications require flexible solutions. Clarke's engineering team develops robust options for some of the most demanding installations and applications worldwide. From the pneumatic starting system for Clarke's C18H series engines, to a full range of alarms & gauges and cooling options, we're hard at work creating solutions for your customer's most complex and demanding projects.

See Reverse Side for Additional Options Available from Clarke

Specifications and information contained in this brochure is subject to change without notice.

SPECIAL OPTIONS AVAILABLE WITH CLARKE ENGINES

GROUP NAME	OPTION NAME
Air Cleaners	UL/FM Single Stage Air Cleaner
	UL/FM Two Stage Air Cleaner
Alarms and/or Gauges	Differential Pressure - Air, Fuel, or Oil
	Temperature - Oil
	Level - Coolant, Oil
	Differential Pressure & Temperature
	Level & Temperature
Battery Kit	Full Alarm/Gauge Package (painted SS or NEMA 4X/IP66)
	Lead Acid (12 or 24V) with Battery Rack & Cables with ship loose box
Cooling Loops	NiCad Batteries (12 or 24V) with Battery Rack & Cables
	FM Approved 250psi Sea Water compatible
	FM Approved 250 psi 316 Stainless Steel
Fuel Hose	FM Approved 400psi High Pressure
	ULC/TSSA Steel Braided Stainless Steel Fuel Hose
Driveshaft Guard	Non Sparking Guard
	Powder Coated Steel Containment Guard
Filters	Duplex Fuel Filters (not available in all models)
	Duplex Oil Filters (not available in all models)
Instrument Panel	NEMA 4X/IP66 316 Stainless Steel
	Dual Language Starting Instructions
Paint	Engine Epoxy Coated Paint
	Base, Powder Coat
Starting	Pneumatic Starter (not available in all models)
	Hydraulic Starter Housing (not available in all models)
Variable Speed	Pressure Limiting Driver - Discharge
	Pressure Limiting Driver - Suction Control
	Pressure Limiting Driver - Discharge & Suction Control
Tropicalization	Stainless Steel Gauge Panel, Fungus Proof Starter & Alternator
	Marine Corrosion Protective Coating (Radiator engines only)
Base	Lube Oil Heater
	Drip Rim (pump only)
	Base Extension for HSC or VT
	Oil Drain Extension
Crating	Air Freight Prep
	Export Crating (engine only)
	Export Crating (pump ready base)



Two Stage Air Cleaners



Battery Kit w/ Ship Loose Box



Full Alarm/Gauge Package



316 SS Cooling Loops



Pressure Limiting Driver



NEMA 4X/IP66 Stainless Steel Instrument Panel

Specifications and information contained in this brochure is subject to change without notice.