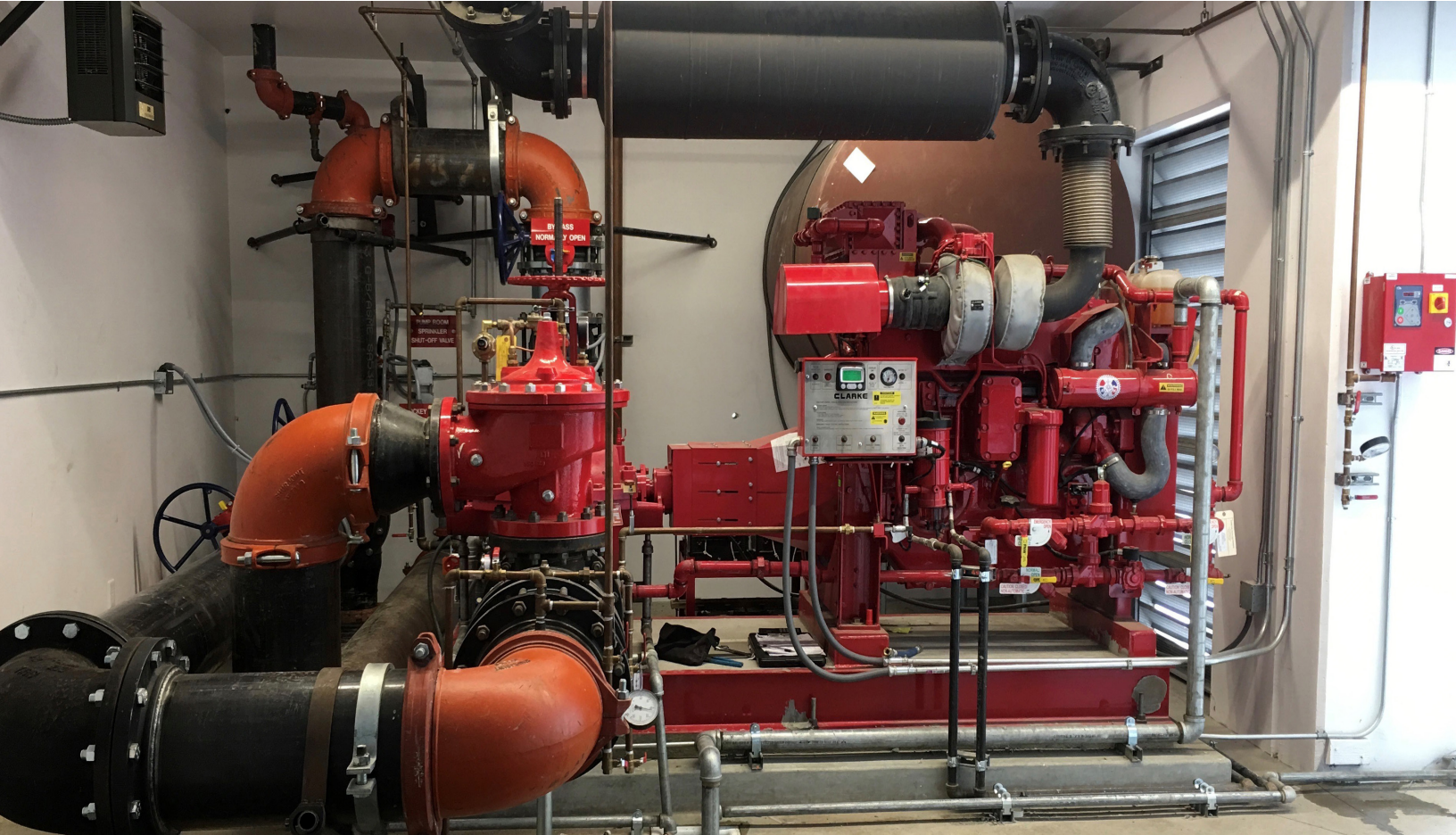


# CLARKE®



**THE CLARKE PLATFORM OF DIESEL FIRE PUMP ENGINES PROVIDE SMOOTH RUNNING DEPENDABILITY, GREATER EQUIPMENT LONGEVITY, AND TRUSTED ADHERENCE TO ALL GLOBAL FIRE PROTECTION REGULATIONS.**

There are many providers of diesel fire pump engines that also assemble different types of engines. These organizations generally don't understand local compliance regulations nor can they provide the documentation needed for submittals, installation requirements, and service support.

With over 55 Years of providing engineering excellence and global service, Clarke is considered a trusted advisor for fire protection legislation bodies globally. Clarke helps to ensure that written specifications are designed to enhance reliability and safety vs. writing specifications around self-serving needs.

## **FEATURES AND BENEFITS**

- Clarke's Premium Four Cylinder Engines are unique because they are balanced using counter rotating balanced shafts to reduce vibration to the building and to critical components on the engine.
- Clarke Engines Ship with Guaranteed Minimum Power to allow the fire pump to provide the flow and pressure needed for the sprinkler system.
- As a Global Supplier since 1964, Clarke has more experience in the design and support of fire pump drivers than any other global provider.
- Clarke's only business is the manufacturing and support of diesel fire pump engines. We do not dilute our efforts and support by targeting non-fire applications.



### Master and Authorized Service Dealer Network

Over 300 Master and Authorized Service Dealers in 180 countries provide emergency repair, start-up commissioning, and aftermarket parts sales for Clarke. Factory trained and certified, Clarke dealers are available 24/7/365. Additionally, Start Up Inspection and Advanced Trouble Shooting classes are available through Master Service dealers or at a Clarke factory.



### Clarke Maintenance Kit Program

Clarke's Annual and 2nd Year Supplemental Maintenance Kits are designed based upon the recommendations of NFPA25 (Standard for the Inspection, Testing, and Maintenance of Water-based Fire Protection Systems).

Based upon a two-year replacement schedule, the Clarke Annual Maintenance Kit includes oil, fuel, and air filters to help keep your engine running smoothly. The second year Supplemental Maintenance Kit includes replacement parts for coolant items and common wear and tear components.



### Clarke 3 Year Warranty with Kit Option

For new diesel fire pump drivers and with the purchase of three Clarke Annual Maintenance Kits and one second year Supplemental Maintenance Kit, Clarke will provide a full three year parts and service warranty on the new engine. An SUI form must be submitted to Clarke with the commissioning date included.

**CLARKE**

100 Progress Place, Cincinnati, OH 45246  
United States of America  
Tel +1-513-475-3473 Fax +1-513-771-8930

Grange Works, Lomand Rd, Coatbridge, ML5-2NN  
United Kingdom  
Tel +44-1236-429946 Fax +44-1236-427274

[www.clarkefire.com](http://www.clarkefire.com)