

| REV | DESCRIPTION | ECN# | DWN | APVD | DATE |
|-----|---|------|-----|------|---------|
| C | REVISED WIRES 56, 68, MDS, ADDED WIRE 67 | 1748 | MJD | MJD | 01SEP10 |
| D | WIRE 74 START LOC. WAS CB. TERMINAL 1. | 1748 | MJD | MJD | 07SEP10 |
| - | ADDED CNTRLD DWG NOTE, BOTH BOXES WERE MARKED | 6309 | MAL | MJD | 07MAY21 |

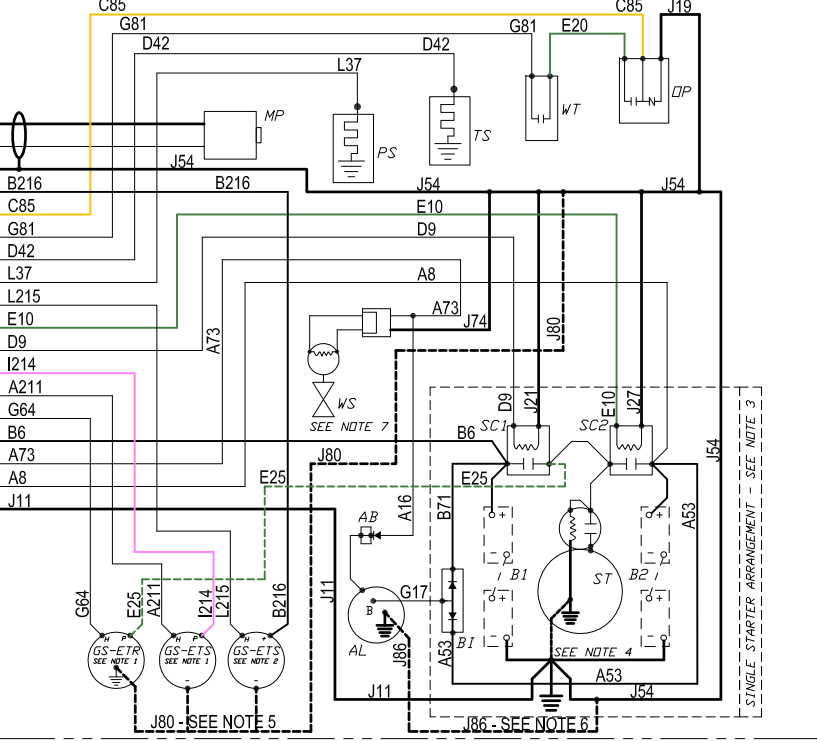
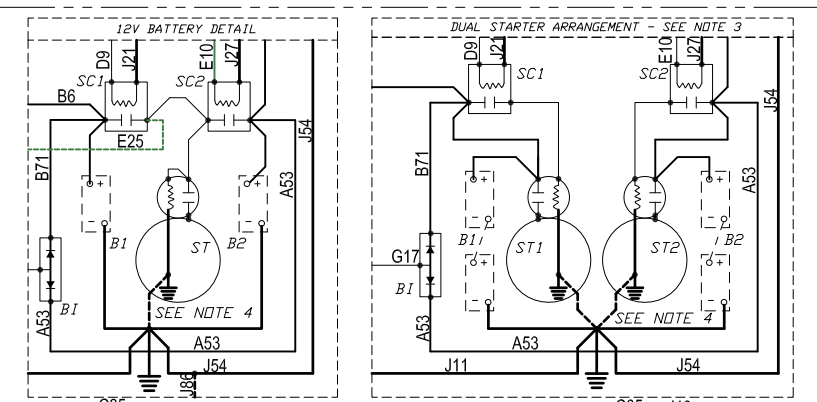
COLOR CODE

- A - WHITE
- B - RED
- C - ORANGE
- D - YELLOW
- E - GREEN
- F - BLUE
- G - PINK
- H - BLACK
- I - BROWN
- J - GRAY
- K - PURPLE

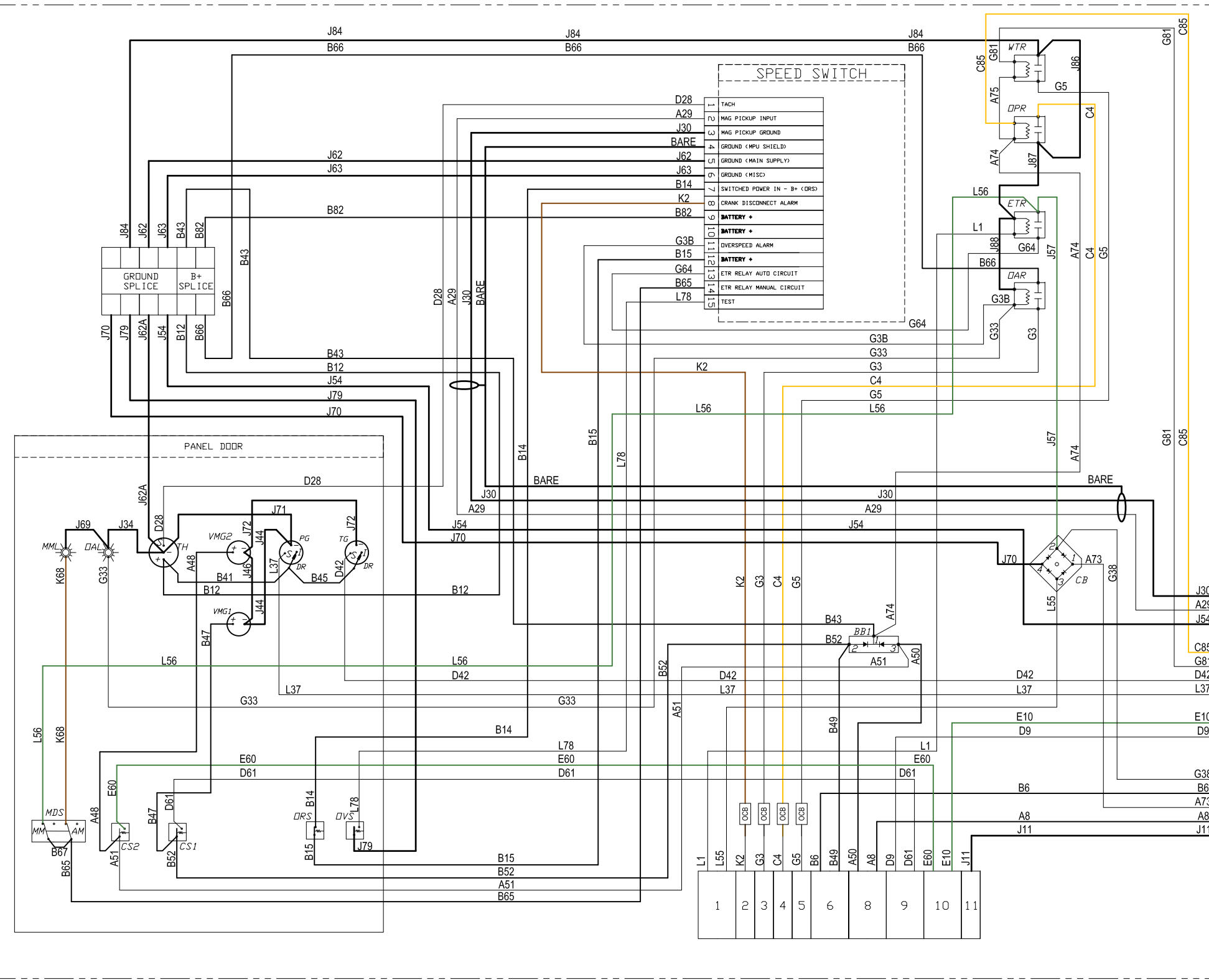
LEGEND

- AB - ALTERNATOR BRIDGE
- AL - ALTERNATOR
- AM - AUTOMATIC MODE POSITION
- AVS - ALARM VERIFY SWITCH
- B1 - BATTERY #1
- B2 - BATTERY #2
- BB1 - BATTERY BRIDGE #1
- BB2 - BATTERY BRIDGE #2
- BES - BUMP ENABLE SWITCH
- BSS - SPEED BUMP SWITCH
- BI - BATTERY ISOLATOR
- CS1 - CRANK (MANUAL) SWITCH - BATT#1
- CS2 - CRANK (MANUAL) SWITCH - BATT#2
- CB - COILANT BRIDGE
- DIA - DIAGNOSTIC GAUGE
- EBL - ALTERNATE ECU INDICATING LAMP
- ESS - ECU SELECTOR SWITCH
- ETR - ETR SOLENOID RELAY
- MDS - MODE SELECTOR SWITCH
- MM - MANUAL MODE POSITION
- MML - MANUAL MODE INDICATING LAMP
- MP - MAGNETIC PICK-UP
- MSS - MANUAL STOP SWITCH
- DAL - OVER-SPEED ALARM LAMP
- DAR - OVER-SPEED ALARM RELAY
- OCB - OVER-CURRENT BREAKER
- DPR - OIL PRESSURE ALARM RELAY
- OVS - OVERSPEED VERIFY @ 67% /RESET SWITCH
- SC1 - STARTER CONTACTOR BATT#1
- SC2 - STARTER CONTACTOR BATT#2
- SCB - SOLENOID CONTROL BOARD
- ST - STARTER
- TCS - TEMPERATURE CONTROL SOLENOID
- TH - TACHMETER - HOURMETER
- VMG1 - VOLTMETER GAUGE, BATT#1
- VMG2 - VOLTMETER GAUGE, BATT#2
- VS - WATER SOLENOID VALVE
- WT - WATER TEMPERATURE N.O. SW 205°F
- WTR - WATER TEMPERATURE ALARM RELAY

ENGINE



INSTRUMENT PANEL



- NOTES:
- GOVERNOR SOLENOID
 - ENERGIZED TO RUN - JU, JW STANDARD
 - ENERGIZED TO STOP - JU, JW OPTIONAL
 - GOVERNOR SOLENOID
 - ENERGIZED TO STOP - DR, DS, DT STANDARD
 - STARTER
 - SINGLE STARTER - JW, DR, DS, DT STANDARD
 - DUAL STARTER - JU STANDARD
 - 24V BATTERY DETAIL SHOWN, FOR 12V SEE 12V BATTERY DETAIL.
 - SINGLE POINT GROUND
 - GROUND STUD PROVIDED ON ENGINE FOR JUNCTION OF BATTERY GROUND CABLES, CONTROLLER GROUND (TERMINAL 11) AND ACCESSORY GROUND.
 - SOME STARTERS HAVE ISOLATED GROUND.
 - SOME GOVERNOR SOLENOIDS HAVE ISOLATED GROUND
 - SOME ALTERNATORS HAVE ISOLATED GROUND
 - WATER SOLENOID VALVE IN RAW WATER SUPPLY COOLING LOOP.
 - VALVE AND WIRING SUPPLIED BY OTHERS. 5 AMPS MAX.

FOR ENGINES BUILT BEGINNING 09SEP10.

CONTROLLED DRAWING
 THIS IS A REGISTERED PART WITH A THIRD PARTY AGENCY FOR USE ON A PRODUCT. NO SUBSTITUTIONS ARE ALLOWED. CONSULT ENGINEERING PRIOR TO AND REGARDING ANY CHANGE.

CLARKE
 Fire Protection Products, Inc.

CONTROLLED DRAWING

DRWN: KJKUNKLER
 DATE: 01APR09
 ENGR: KJKUNKLER

WIRING DIAGRAM, MECHANICAL ENGINE WITH SPEED SWITCH & FRONT OPENING INSTRUMENT PANEL

PART NO: C071612

SCALE: NTS
 UNITS: MM [INCH]

PAGE 1 OF 1